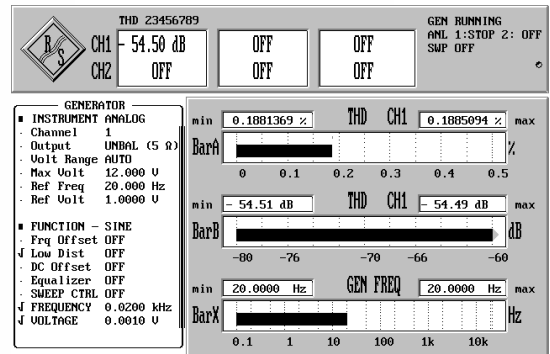
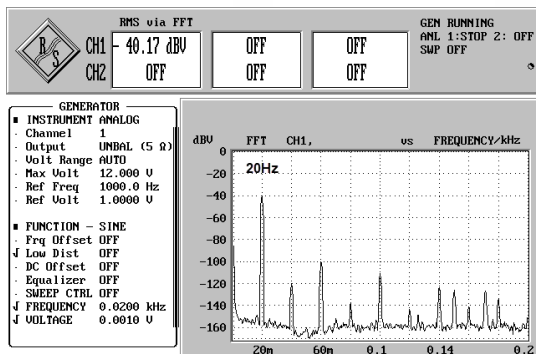
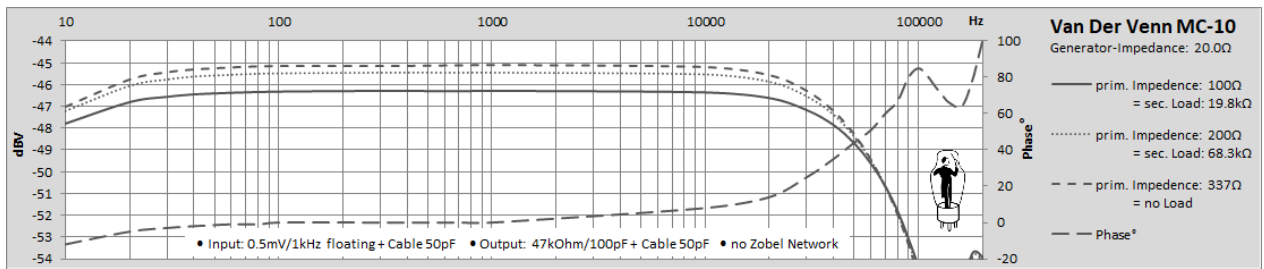
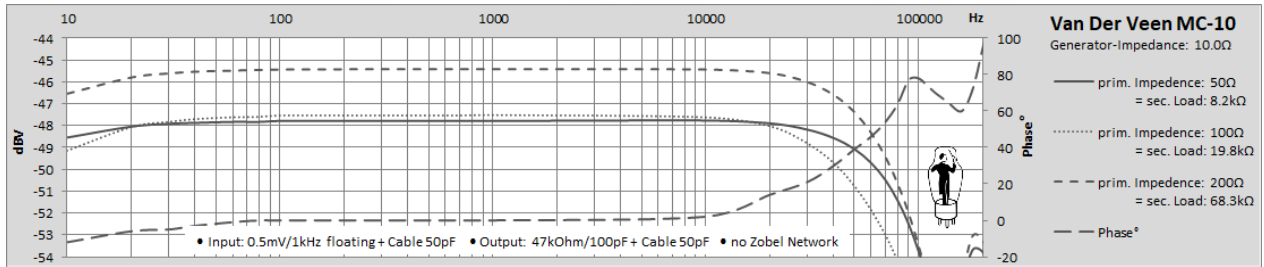
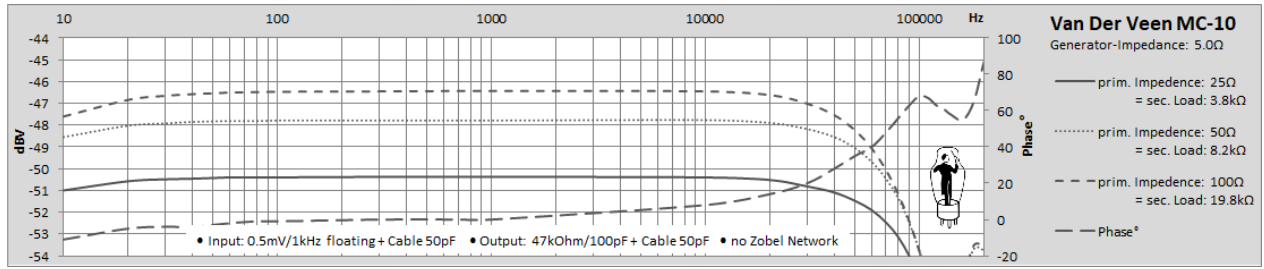
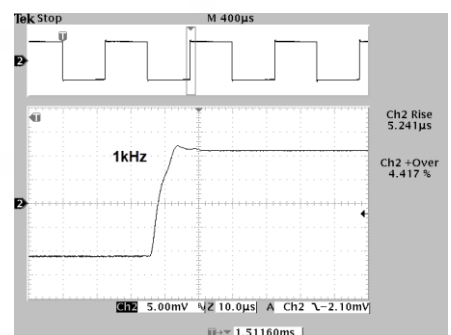
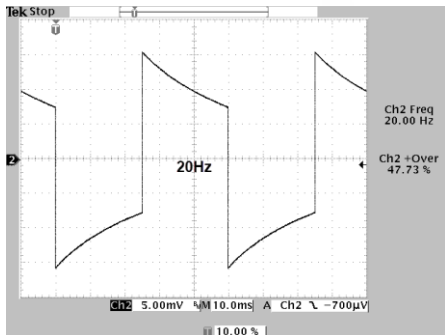


Menno Van Der Veen MC-10 MC-Transformer

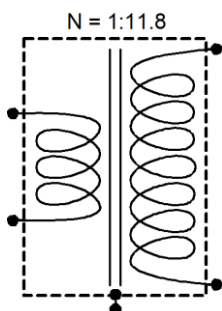
This is not the result of a scientific measurement, just DIY-Information to choose the desired MC-Transformer



Input: 1.0mV_{RMS}/5Ω + Cable 50pF Output: 47kΩ/100pF + Cable 50pF (no Impedance Correction, no Zobel-Network)



Input: 1.0mV_{RMS}/15Ω + Cable 50pF Output: 47kΩ/100pF + Cable 50pF (no Impedance Correction, no Zobel-Network)



- Turns Ratio (N): 1:11.8
 - Prim. Inductance (L_P): 0.96H/100Hz (Output open)
 - Case connected to Ground-Pin
 - No Noise Shield between prim./sec. Winding
- THD: 20Hz ~0.188%
1kHz ~0.002%
10kHz ~0.001%

